

# Fulū (flu) FAQ

*O le fulū, po' o le "flu," o se fa'ama'i i pipisi e masani ona sosolo mai ia Oketopa e o' o ia Me i le Iunaite Setete ma ona teritori.*

*O nisi nei o fesili masani ma tali e uiga i le fulū e fesoasoani ia oe puipuia i lenei tausaga.*

## E fa'apefea ona sosolo le fulū?

O le fulū e masani lava ona sosolo e ala i tama'i matau'a e faia pe a tale, mafatua pe tautala tagata e maua i le fulū.



## O a fa'ailoga ole fulū?

O tagata e maua i le fulū e masani ona lagona nisi o nei fa'ailoga uma: fiva po'o lagona fiva/ma'alili, tale, tiga fa'a'i, tafe pe ma'i le isu, tiga maso po'o le tino, tiga le ulu, vaivai ma o nisi taimi e pua'i ma manava tatafi (sili atu ona taatele i tamaiti nai lo tagata matutua).



## O ai e tatau ona fai le tui ole fulū?

E tatau ona maua e tagata uma le tui o le flu. E fautuaina e le Centers for Disease Control and Prevention (CDC) tagata uma e 6 masina le matutua ma matutua atu ia tui i vaiata uma o le flu, aemaise lava i latou e sili atu le lamatia o le maua i le flu. E fautuaina fo'i tui puipui mo tagata ma'itaga.

## O ai e lamatia i le fulū?

So'o se tagata e mafai ona maua i le fulū, ae e sili atu ona mata'utia mo tagata vaivai e pei o pepe ma tamaiti laiti, tagata e 65 tausaga ma matutua atu, fafine ma'itaga, ma tagata o lo'o i ai ni tulaga fa'alesoifua maloloina po'o se fa'afitauli fa'aletonu. O le auala sili e puipuia ai ma'i tuga e feso'ota'i ma le fulū o le faia lea o se tui puipui i tausaga ta'itasi.

## O afea e tatau ai ona ou tui?

Ole vaiata ole fulū e masani ona amata mai ia Oketopa ia Me. Ole taimi sili e fai ai se tui ole fulū ole taimi ole tautoulu poo le taumalulu ina ia puipuia ile vaiata ole fulū.



## Aisea e tatau ai ona ou faia le tui ole fulū?

O le tui o le fulū o le auala sili lea e puipuia ai oe ma e pele ia te oe mai le fulū ma ona fa'alavelave fa'alavelave. E mafai fo'i ona fa'aititia le lamatiaga o ma'i fa'atatau i le fulū, falema'i, ma le oti.

Mo nisi fa'amatalaga i fa'amanuiaga o tui puipui, asiasi: [cdc.gov/flu/prevent/vaccine-benefits.htm](https://www.cdc.gov/flu/prevent/vaccine-benefits.htm)

## O a ituaiga eseese o tui fulū?

O tui fa'ama'i fulū e masani ona tu'iina po'o se fana i le lima po'o se fa'asu'i isu. Ole tui ole fulū e fa'atagaina mo tagata ta'ito'atasi 6 masina ma luga atu. E fa'atagaina le su'i isu mo tagata 2 i le 49 tausaga le matutua. E iai ni tui fa'ama'i 'ese'ese e maua e 'ese'ese e fa'atatau i le gaosiga.

*E mafai ona maua nisi fa'amatalaga ile CDC Vaccines Flu Vaccines iinei:*  
[cdc.gov/flu/prevent/flushot.htm](https://www.cdc.gov/flu/prevent/flushot.htm)



Source: Centers for Disease Control and Prevention (cdc.gov)

**APIAHF**  
ASIAN & PACIFIC ISLANDER  
AMERICAN HEALTH FORUM



This publication was made possible by cooperative agreement CDC-RFA-IP21-2106 from the Centers for Disease Control and Prevention of the U.S. Department of Health and Human Services (HHS). Its contents are solely the responsibility of the authors and do not necessarily represent the official views of CDC/HHS.

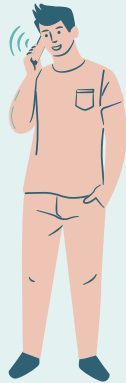
# O Fesili Māsani e Fai uiga le Fulū

## 'E fia le tau o tui puipuia mo le fulū?

'O le tau o le tui e fa'amoemoe lava i lau inisiua. 'E fa'afeso'ota'i i lau inisiua ma fesili ai po'o fea o lo'o faia ai tui puipuia totogi fua. 'E le gata i lea e i ai foi nisi falema'i soifua mālōlōina po'o nisi 'ōfisa o lo'o latou ofoina e tui totogi fua po'o tui taugofie le tau.

'O nisi fa'amatalaga e mafai ona e toe manatu ifo le Tau o Tui Puipuia (Vaccination Cost) ma nisi Fa'amatalaga o le Fulū (Flu Guide):

[aa-nhpihealthresponse.org](http://aa-nhpihealthresponse.org)



## 'O fea e mafai ona ou maua se tui puipuia mo le fulū?

'E mafai ona faia lou tui puipuia mai nei fale, nofoaga po'o ofisa:

- Primary Care Physicians
- Urgent Care/Minute Clinics
- Federally Qualified Health Centers
- Rural Health Clinics
- Native Hawaiian Health Centers
- Indian Health Service
- Local health departments
- Pharmacies  
(e.g., Walmart, Walgreens, CVS, Rite-Aid)



## 'E manatu ou lagona se ma'i lou tino mai le tui puipuia a le fulū?



'O le tui puipuia mo le fulū e saogalēmū ma aogā mo tatou tino. 'O nisi tagata e āfaina itiitia mai le tui, latou te fa'ailoga le tigā o lima, ma'i vevela laititi, gaōi o tino atoa, ae toe mau le fa'ailoga mai le lua i le tolu aso.

## 'E mafai ona fai fa'atasi le tui o le Koviti-19 ma tui o le fulū?

'E mafai se tagata fai fa'atasi o tui o Koviti-19 ma le Fulū, pe'āfai ua fa'atagaina oe, ma iai le fa'amaonia mai le CDC ma le ACIP.

## 'O le ā 'ese'ese o le ma'i o Koviti-19 ma le ma'i o le Fulū?

O le Koviti-19 ma le Fulū o fa'ama'i ia e faigofie ona pipisi atu i tagata 'ese'ese, ma o le mea e ala ai nei virisi 'ese'ese. O le ma'i Koviti-19 e mafua mai le virisi o le SAR Cov-2. A'o virisi mo fulū e tele ma e faigofie ona pipisi nei ma'i i tausaga uma.



Source: Centers for Disease Control and Prevention (cdc.gov)

**APIAHF**  
ASIAN & PACIFIC ISLANDER  
AMERICAN HEALTH FORUM



For additional AA and NH/PI translated resources, please visit our National AA and NH/PI Health Response Partnership Webpage at: [www.AA-NHPIHealthResponse.org](http://www.AA-NHPIHealthResponse.org)

This publication was made possible by cooperative agreement CDC-RFA-IP21-2106 from the Centers for Disease Control and Prevention of the U.S. Department of Health and Human Services (HHS). Its contents are solely the responsibility of the authors and do not necessarily represent the official views of CDC/HHS.